



# Product Catalogue 2024



**Helping Protect Healthcare and Education Professionals  
from Injury Due to Challenging Behaviour.**

# Contents

- 2 About BitePRO® Bite Resistant Clothing

## Grab Bags

- 3 About BitePRO® Grab Bags
- 4 700209 - BitePRO® Essentials Grab Bag
- 5 100600 - BitePRO® Grab Bag

## Arm Protection

- 6 BitePRO® Arm Protection
- 7 100500 - BitePRO® Bite Resistant Arm Guards V1
- 8 100503 - BitePRO® Bite Resistant Arm Guards V1 with Added Protection
- 9 100501 - BitePRO® Bite Resistant Arm Guards V2
- 10 100504 - BitePRO® Bite Resistant Arm Guards V3
- 11 100502 - BitePRO® Bite Resistant Full Arm Guards V4
- 12 100506 - BitePRO® Bite Resistant Full Arm Guards V4 with Added Protection
- 13 100505 - BitePRO® Bite Resistant Arm Guards V5

## Upper Body Protection

- 14 BitePRO® Upper Body Protection
- 15 800001 - BitePRO® Bite Resistant Turtleneck Jacket
- 16 100103 - BitePRO® Bite Resistant Hoodie with Thumbholes
- 17 100109 - BitePRO® Bite Resistant Sweatshirt
- 18 400112 - BitePRO® Chest Protector

## Lower Body Protection

- 19 BitePRO® Lower Body Protection
- 20 200102 - BitePRO® Bite Resistant Long Johns
- 21 200200 - BitePRO® Bite Resistant Leg Guards

## Hand Protection

- 22 About BitePRO® Hand Protection
- 23 300161 - BitePRO® Bite Resistant Gloves (Short)
- 24 300162 - BitePRO® Bite Resistant Gloves (Long)
- 25 300163 - BitePRO® Bite Resistant Fingerless Gloves (Long)

## Seclusion Wear

- 26 About BitePRO® Seclusion Wear
- 27 100122 - BitePRO® Seclusion Nightie

## Additional Details and Contact

- 28 Caring for Your BitePRO® Clothing
- 29 We're Here To Help
- 30 Contact

Visit our website: [www.bite-pro.com](http://www.bite-pro.com)

T: +44 (0) 1423 863 790 | E: [info@bite-pro.com](mailto:info@bite-pro.com)



# About BitePRO® Bite Resistant Clothing

**BitePRO® Bite Resistant Clothing is a highly acclaimed brand of scratch, pinch, and bite resistant clothing. Our garments have been specifically designed to reduce the risk of injury as a direct result of dealing with challenging behaviour.**

Challenging behaviour, also known as behaviours which challenge, is often seen in people with health problems that affect communication and the brain, such as learning disabilities, autism, or dementia. Such behaviour can include:

- Verbal aggression
- Physical aggression
- Self-harm
- Destructiveness
- Disruptiveness

It is important to differentiate between self-injurious behaviour and behaviour that injures other people. There appears to be a lot of research and literature about self-injury in association with challenging behaviour.

However, there is very little discussion when people with challenging behaviour injure other people i.e. healthcare or educational professionals, carers or psychiatric social workers.

We understand most individuals that cause such injuries to others through challenging behaviour, are not doing it intentionally. This is not a conscious, pre-meditated act of violence. Instead, it is invariably a form of communication. It is a way for a certain individual to control their environment when they are otherwise unable to easily communicate.

In the context of challenging behaviour there are specific behaviours that are likely to cause injury to others or oneself, the most common being:

- Biting
- Scratching
- Kicking
- Punching
- Grabbing
- Hair pulling
- Squeezing
- Pinching
- Head banging

Specially designed BitePRO® Bite Resistant Clothing & Arm Guards are being effectively utilised by those who support, care for, and educate individuals with challenging behaviour. BitePRO® supply professionals in the medical, care and special education sector worldwide. However, we also have a growing number of private individuals who wish to protect themselves from others i.e. family members or loved ones displaying challenging behaviour.

Please note, our products are all Machine washable, comfortable to wear for long periods of time, and they are latex free. The quality and value of our products is unparalleled with garments lasting for several years with the correct care and maintenance.

## What are the benefits of adopting BitePRO® protective clothing?

- **Prioritise Well-being:** BitePRO® clothing offers unparalleled protection, allowing workers to focus on their primary goal: care. With the assurance of safety, they can perform their duties with confidence.
- **Reduced Injuries, Increased Presence:** With fewer injuries, there's a decrease in time taken off by staff. This means more consistent care and a more robust team presence.
- **Economic Benefits:** Fewer incidents lead to decreased liability and a reduction in economic strain from productivity loss post-violence. An investment in BitePRO® is an investment in a more efficient, effective workplace.
- **Boosted Morale:** When staff feel protected and cared for, morale soars. Higher morale leads to improved teamwork, reduced staff turnover, and an overall healthier work environment.



BitePRO® Arm Guards Version 3





## Ready for Every Scenario.

In environments where rapid response and adaptability are crucial, BitePRO® Grab Bags emerge as the epitome of quick-access protection.

BitePRO® Grab Bags come in two types: the Essentials Grab Bag, offering a comprehensive set of individual protective wear ideal for everyday use, and the BitePRO® Grab Bag, a versatile selection for multiple wearers, catering to diverse and immediate safety needs.

Each bag is thoughtfully compiled to ensure staff have quick access to a range of bite resistant garments, suitable for various scenarios — from routine tasks to critical interventions. Both Grab Bags offer a 10% discount compared to purchasing the items separately.



BitePRO®  
Clothing

● BitePRO® Grab Bag



Product: **BitePRO® Essentials Grab Bag**

Model #: **700209**

The BitePRO® Essentials Grab Bag is an expertly curated collection of our most popular products, designed for quick access and comprehensive safety, all in a handy and portable drawstring bag.

These items can be used individually to suit different scenarios or layered together for enhanced protection. The Essentials Grab Bag is ideal for professionals in high-risk environments who need immediate access to reliable protection across a range of situations.

Purchasing the Essentials Grab Bag saves you 10% on purchasing the products individually, and you receive the drawstring BitePRO® bag for free.

#### Features & Benefits

- ✓ Users can quickly choose an appropriate garment to deal with a particular incident or patient
- ✓ Wide range of garment sizes available
- ✓ Cost-effective for health care facilities with a frequent turnaround of operational staff
- ✓ Bag contains the same size of each product
- ✓ All three garments can be layered and worn together for additional protection
- ✓ Includes our most popular products

#### What's Included:

- ✓ 1 x Version 3 Arm Guards (S-XL)
- ✓ 1 x Bite Resistant Gloves - Short (S-2XL)
- ✓ 1 x Turtleneck Jacket (S-2XL)

#### Who Is This Product Suitable For?

- ✓ Mental Health Care
- ✓ Special Needs
- ✓ Special Education
- ✓ Challenging Behaviour
- ✓ Learning Disabilities



#### Blade Cut Resistance

EN 388:2003	Level 5 (Old Standard)
EN 388:2016	Level E
ISO 13997:1999	Level 5 (The highest possible)
ANSI/ISEA 2016	Level A5

#### Puncture Resistance

EN 388:2016	Level 4 (The highest possible)
-------------	--------------------------------

#### Tear Resistance

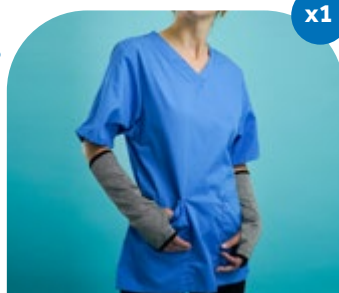
EN 388:2016	Level 4 (The highest possible)
-------------	--------------------------------

#### Abrasion Resistance

EN 388:2016	Level 3
-------------	---------

#### Product Details

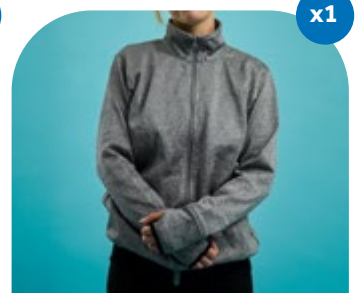
Arm Guard Sizes	S, M, L, XL
Bite Resistant Gloves - Short	S, M, L, XL, 2XL
Turtleneck Sizes	S, M, L, XL, 2XL
Clothing Care	Machine washable up to 40° Celsius. Wash dark colours separately. Do not wash with fabric conditioner. Reshape whilst damp.



BitePRO® Version 3 Arm Guards



BitePRO® Bite Resistant Gloves - Short



BitePRO® Turtleneck Jacket



Product: **BitePRO® Grab Bag**

Model #: **100600**

The BitePRO® Grab Bag is the ultimate solution for team safety in high-risk environments. Packed with a diverse array of our protective gear, this bag is ideal for staff areas in settings like healthcare facilities, educational institutions, and care homes. The variety ensures that team members can quickly find the right fit and level of protection for different scenarios.

Purchasing the Essentials Grab Bag saves you 10% on purchasing the products individually, and you receive the BitePRO® Carry Bag for free.

#### Features & Benefits

- ✓ Users can quickly choose an appropriate garment to deal with a particular incident or patient
- ✓ Wide range of garment sizes available
- ✓ Cost-effective for health care facilities with a frequent turnaround of operational staff
- ✓ Includes a range of products and 4 sizes of each
- ✓ Products can be layered and worn together

#### What's Included:

- ✓ 4 x Version 1 Arm Guards (S, M, L & XL)
- ✓ 4 x Version 3 Arm Guards (S, M, L & XL)
- ✓ 4 x Version 4 Arm Guards (S, M, L & XL)
- ✓ 4 x Turtleneck Jacket (S, M, L & XL)

#### Who Is This Product Suitable For?

- Professionals working within these sectors:
- ✓ Special Education
  - ✓ Mental Health Care
  - ✓ Special Needs
  - ✓ Challenging Behaviour
  - ✓ Learning Disabilities

#### Blade Cut Resistance

EN 388:2003	Level 5 (Old Standard)
EN 388:2016	Level E
ISO 13997:1999	Level 5 (The highest possible)
ANSI/ISEA 2016	Level A5

#### Puncture Resistance

EN 388:2016	Level 4 (The highest possible)
-------------	--------------------------------

#### Tear Resistance

EN 388:2016	Level 4 (The highest possible)
-------------	--------------------------------

#### Abrasion Resistance

EN 388:2016	Level 3
-------------	---------

#### Product Details

Arm Guard Sizes	S, M, L, XL
Turtleneck Sizes	S, M, L, XL, 2XL
Clothing Care	Machine washable up to 40° Celsius. Wash dark colours separately. Do not wash with fabric conditioner. Reshape whilst damp



✓ Great first time purchase to get to know the range



BitePRO® Version 1  
Arm Guards



BitePRO® Version 3  
Arm Guards



BitePRO® Version 4  
Arm Guards



BitePRO® Turtleneck  
Jacket



BitePRO® Carry Bag





## Comfort, Without Compromise.

Facing daily challenges in caregiving and educational settings, professionals often find their arms vulnerable during close-contact tasks. BitePRO® Arm Guards offer a protective shield in these moments.

BitePRO® Arm Guards design balance robust safety with comfort, ensuring they can be worn continuously, facilitating care and support without restricting movement or causing discomfort.

A close-up photograph of two hands wearing grey, knitted arm guards. The hands are positioned to show the front and side of the guards. The guards have a black elastic band at the wrist and a small opening at the thumb. A white line with dots at both ends points from the text 'BitePRO® Bite Resistant Arm Guards V3' to the side of the guard on the right hand.

BitePRO® Bite Resistant Arm Guards V3



Product: **BitePRO® Bite Resistant Arm Guards V1**

Model #: **100500**

BitePRO® Arm Guards Version 1 offer strong lower arm protection with our ground-breaking BitePRO® Fabric, designed to guard against human bites. These guards are easy to wear under or over clothes and feature a fluid-resistant liner for safety and cleanliness. Ideal for various professional settings, they provide reliable coverage and comfort.

This product is also available with added protection; model 100503.

#### Features & Benefits

- ✓ Sold in pairs
- ✓ Excellent bite resistance
- ✓ Simple thumb loop for better fit
- ✓ Fully lined with our ground breaking material
- ✓ Quick and easy to put on
- ✓ Highly breathable inner lining
- ✓ Durable and fluid repellent outer material
- ✓ 100% Latex free
- ✓ Also available as model with additional outstanding protection from severe bruising and blunt forced trauma - Model 100503

#### Who Is This Product Suitable For?

Professionals working within these sectors:

- ✓ Mental Health Care
- ✓ Special Needs
- ✓ Special Education
- ✓ Challenging Behaviour
- ✓ Learning Disabilities

#### Blade Cut Resistance

EN 388:2003	Level 5 (Old Standard)
EN 388:2016	Level E
ISO 13997:1999	Level 5 (The highest possible)
ANSI/ISEA 2016	Level A5

#### Puncture Resistance

EN 388:2016	Level 4 (The highest possible)
-------------	--------------------------------


#### Tear Resistance

EN 388:2016	Level 4 (The highest possible)
-------------	--------------------------------

#### Abrasion Resistance

EN 388:2016	Level 3
Dimensional Stability Test	Achieved Excellent Results

#### Product Details

Sizes	S, M, L, XL
Colour	Black
Place of Manufacture	UK
Clothing Care	Machine washable up to 40° Celsius. Wash dark colours separately. Do not wash with fabric conditioner. Reshape whilst damp
	

#### Size Guide in CM

	S	M	L	XL
Wrist Circumference	18	20	22	24
Forearm Circumference	22	24	26	28
Sleeve Length	23	26	29	29



**Learn More: Click here to view the BitePRO® Arm Guards V1 product demonstration.**





**ADDED  
PROTECTION**

Product: **BitePRO® Bite Resistant Arm  
Guards V1  
with Added Protection**

BitePRO® Arm Guards Version 1 with Added Protection are designed for enhanced safety in challenging environments. Featuring our signature protective BitePRO® Fabric to guard against bites and a durable fluid resistant outer liner, these guards also include compression deflecting foam to reduce the risk of pain, bruising and injury from blunt force trauma.



#### Features & Benefits

- ✓ Sold in pairs
- ✓ Overtly worn
- ✓ Excellent bite resistance
- ✓ Recommended for protection against severe biting injuries
- ✓ Lower arm coverage only
- ✓ Simple thumb loop for better fit
- ✓ Can be layered with gloves or upper body protection
- ✓ Worn tight around the forearm
- ✓ Quick and easy to put on
- ✓ Highly breathable inner lining
- ✓ Durable and fluid repellent outer material
- ✓ 100% Latex free
- ✓ Additional protection to prevent severe bruising and blunt forced trauma

#### Who Is This Product Suitable For?

Professionals working within these sectors:

- ✓ Mental Health Care
- ✓ Special Needs
- ✓ Special Education
- ✓ Challenging Behaviour
- ✓ Learning Disabilities

#### Blade Cut Resistance

EN 388:2003	Level 5 (Old Standard)
EN 388:2016	Level E
ISO 13997:1999	Level 5 (The highest possible)
ANSI/ISEA 2016	Level A5

#### Puncture Resistance

EN 388:2016	Level 4 (The highest possible)
-------------	--------------------------------

#### Tear Resistance

EN 388:2016	Level 4 (The highest possible)
-------------	--------------------------------

#### Abrasion Resistance

EN 388:2016	Level 3
-------------	---------

#### Product Details

Sizes	S, M, L, XL
Colour	Black
Place of Manufacture	UK
Clothing Care	Machine washable up to 40° Celsius. Wash dark colours separately. Do not wash with fabric conditioner. Reshape whilst damp

#### Size Guide in CM

	<b>S</b>	<b>M</b>	<b>L</b>	<b>XL</b>
Wrist Circumference	18	20	22	24
Forearm Circumference	22	24	26	28
Sleeve Length	23	26	29	29



**Learn More: Click here to view the BitePRO®  
Arm Guards V1 product demonstration.**



Product: **BitePRO® Bite Resistant Arm Guards V2**

Model #: **100501** Minimum Order Quantity - 50

BitePRO® Arm Guards Version 2 offer targeted lower arm protection with a discreet design for the ability to wear them under clothing, keeping a low profile while providing robust bite resistance. These guards are made entirely from our specialised BitePRO® Fabric, providing robust bite, scratch and pinch resistance

Ideal for situations requiring unobtrusive safety measures, these guards ensure effective protection without compromising appearance or comfort.



#### Features & Benefits

- ✓ Sold in pairs
- ✓ Excellent bite resistance
- ✓ Worn tight around the forearm
- ✓ 100% Latex free
- ✓ Popular in medical environments where disposable gloves are regularly worn
- ✓ Designed to be worn against the skin
- ✓ Low profile means they are extremely discreet

#### Who Is This Product Suitable For?

Professionals working within these sectors:

- ✓ Mental Health Care
- ✓ Special Needs
- ✓ Special Education
- ✓ Challenging Behaviour
- ✓ Learning Disabilities

#### Blade Cut Resistance

EN 388:2003	Level 5 (Old Standard)
EN 388:2016	Level E
ISO 13997:1999	Level 5 (The highest possible)
ANSI/ISEA 2016	Level A5

#### Puncture Resistance

EN 388:2016	Level 4 (The highest possible)
-------------	--------------------------------

#### Tear Resistance

EN 388:2016	Level 4 (The highest possible)
-------------	--------------------------------

#### Abrasion Resistance

EN 388:2016	Level 3
Dimensional Stability Test	Achieved Excellent Results

#### Product Details

Sizes	S, M, L, XL
Colour	As per image, due to the nature of the technical fibres
Place of Manufacture	UK
Clothing Care	Machine washable up to 40° Celsius. Wash dark colours separately. Do not wash with fabric conditioner. Reshape whilst damp

#### Size Guide in CM

	S	M	L	XL
Wrist Circumference	18	20	22	24
Forearm Circumference	22	24	26	28
Sleeve Length	22	24	25	26



Product: **BitePRO® Bite Resistant Arm Guards V3**

Model #: **100504**

BitePRO® Arm Guards Version 3, a top choice among our range, provide extensive protection from just below the elbow to the base of the fingers. Designed with arm to inner palm and back of hand coverage, they safeguard the vulnerable joints and tendons in the hand, wrist and arm effectively. Their low profile and close-to-skin fit make them easily layerable with personal clothing, offering discreet yet comprehensive safety.

#### Features & Benefits

- ✓ Sold in pairs
- ✓ Excellent bite resistance
- ✓ Worn tight around the forearm
- ✓ Also offering bite protection on inside and back of hand
- ✓ 100% Latex free
- ✓ Thumbholes give upper hand coverage
- ✓ Designed to be worn against the skin
- ✓ Can be layered with gloves or upper body protection

#### Who Is This Product Suitable For?

Professionals working within these sectors:

- ✓ Mental Health Care
- ✓ Special Needs
- ✓ Special Education
- ✓ Challenging Behaviour
- ✓ Learning Disabilities

#### Blade Cut Resistance

EN 388:2003	Level 5 (Old Standard)
EN 388:2016	Level E
ISO 13997:1999	Level 5 (The highest possible)
ANSI/ISEA 2016	Level A5

#### Puncture Resistance

EN 388:2016	Level 4 (The highest possible)
-------------	--------------------------------

#### Tear Resistance

EN 388:2016	Level 4 (The highest possible)
-------------	--------------------------------

#### Abrasion Resistance

EN 388:2016	Level 3
Dimensional Stability Test	Achieved Excellent Results

#### Product Details

Sizes	S, M, L, XL
Colour	As per image, due to the nature of the technical fibres
Place of Manufacture	UK
Clothing Care	Machine washable up to 40° Celsius. Wash dark colours separately. Do not wash with fabric conditioner. Reshape whilst damp

#### Size Guide in CM

	S	M	L	XL
Hand (Not Including Thumb)	18	20	22	24
Forearm Circumference	22	24	26	28



**Learn More: Click here to view the BitePRO® Arm Guards V3 product demonstration.**







Product: **BitePRO® Bite Resistant Full Arm Guards V4**

Model #: **100502**

BitePRO® Arm Guards Version 4 provide extensive arm protection, extending from across the shoulders to the wrists. Integrated thumb loops keep the guards securely in place during intense activity. The inner lining is made of our BitePRO® Fabric, offering effective bite resistance and the fluid resistant polyester outer liner helps prevent the spread of bodily fluids from bites and increase cleanliness

This product is also available with added protection; model 100506.

#### Features & Benefits

- ✓ Full arm guard design – sold as one unit
- ✓ Excellent bite resistance
- ✓ Quick and easy to put on
- ✓ Highly breathable inner lining
- ✓ Durable and fluid repellent outer material
- ✓ 100% Latex free
- ✓ Thumb-loops to keep sleeves in perfect position even when arms are fully stretched or during high level of activity
- ✓ Can be worn discretely under clothing
- ✓ Lower arm, upper arm and shoulder protection
- ✓ Fully lined product

#### Who Is This Product Suitable For?

Professionals working within these sectors:

- ✓ Mental Health Care
- ✓ Special Needs
- ✓ Special Education
- ✓ Challenging Behaviour
- ✓ Learning Disabilities

#### Blade Cut Resistance

EN 388:2003	Level 5 (Old Standard)
EN 388:2016	Level E
ISO 13997:1999	Level 5 (The highest possible)
ANSI/ISEA 2016	Level A5

#### Puncture Resistance

EN 388:2016	Level 4 (The highest possible)
-------------	--------------------------------

#### Tear Resistance

EN 388:2016	Level 4 (The highest possible)
-------------	--------------------------------

#### Abrasion Resistance

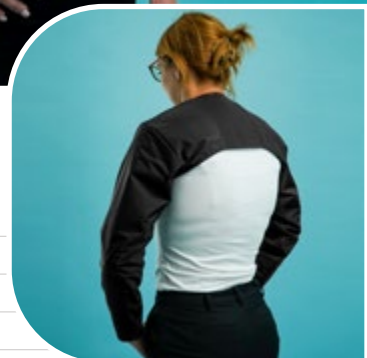
EN 388:2016	Level 3
Dimensional Stability Test	Achieved Excellent Results

#### Product Details

Sizes	S, M, L, XL
Colour	Black
Place of Manufacture	UK
Clothing Care	Machine washable up to 40° Celsius. Wash dark colours separately. Do not wash with fabric conditioner. Reshape whilst damp

#### Size Guide in CM

	S	M	L	XL
Chest	92-102	102-107	107-112	112-117
Overarm Sleeve	53.5	56	61.5	67



**Learn More: Click here to view the BitePRO® Arm Guards V4 product demonstration.**



**ADDED  
PROTECTION**

Product: **BitePRO® Bite Resistant Full  
Arm Guards V4 with Added Protection**

Model #: **100506**

BitePRO® Arm Guards Version 4 with Added Protection are designed to cover the entire arm, from shoulders to wrists, in a practical one-piece format. They feature compression deflecting foam for extra protection against impact and blunt force trauma, making them ideal protection in physical scenarios.

The inner lining is crafted from our durable BitePRO® Fabric for bite resistance, while the outer layer is a water-resistant polyester liner, preventing bodily fluid spread and ensuring cleanliness.

#### Features & Benefits

- ✓ Full arm guard design – sold as one unit
- ✓ Overtly worn
- ✓ Excellent bite resistance
- ✓ Quick and easy to put on
- ✓ Highly breathable inner lining
- ✓ Durable and fluid repellent outer material
- ✓ Thumb-loops to keep sleeves in perfect position even when arms are fully stretched or during high level of activity
- ✓ Recommended for protection against severe biting injuries
- ✓ Lower arm, upper arm and shoulder protection 100% Latex free
- ✓ Additional protection to prevent severe bruising and blunt forced trauma

#### Who Is This Product Suitable For?

Professionals working within these sectors:

- ✓ Mental Health Care
- ✓ Special Needs
- ✓ Special Education
- ✓ Challenging Behaviour
- ✓ Learning Disabilities

#### Blade Cut Resistance

EN 388:2003	Level 5 (Old Standard)
EN 388:2016	Level E
ISO 13997:1999	Level 5 (The highest possible)
ANSI/ISEA 2016	Level A5

#### Puncture Resistance

EN 388:2016	Level 4 (The highest possible)
-------------	--------------------------------

#### Tear Resistance

EN 388:2016	Level 4 (The highest possible)
-------------	--------------------------------

#### Abrasion Resistance

EN 388:2016	Level 3
-------------	---------

#### Product Details

Sizes	S, M, L, XL
Colour	Black
Place of Manufacture	UK
Clothing Care	Machine washable up to 40° Celsius. Wash dark colours separately. Do not wash with fabric conditioner. Reshape whilst damp

#### Size Guide in CM

	S	M	L	XL
Chest	92-102	102-107	107-112	112-117
Overarm Sleeve	53.5	56	61.5	67



**Learn More: Click here to view the BitePRO®  
Arm Guards V4 product demonstration.**



Product: **BitePRO® Bite Resistant Arm Guards V5**

Model #: **100505**

BitePRO® Arm Guards Version 5 extend the protective features of our popular Version 3 to provide full-arm coverage, from the base of the fingers up to the shoulders, in a seamless one-piece design.

Crafted entirely with our durable BitePRO® Fabric, these guards offer full arm protection from bites and scratches. The design ensures full mobility and comfort, making them suitable for extended wear in various professional settings.

#### Features & Benefits

- ✓ Full arm guard design – sold as one unit
- ✓ Lower arm, upper arm and shoulder protection
- ✓ Can be worn both over or under clothing
- ✓ Excellent bite resistance
- ✓ Worn tight around the forearm
- ✓ Thumbholes to keep the sleeves in perfect position even when arms are fully stretched or during high levels of activity
- ✓ Also offering bite protection on inside and back of hand
- ✓ Thumbhole for improved fit
- ✓ 100% Latex free

#### Who Is This Product Suitable For?

Professionals working within these sectors:

- ✓ Mental Health Care
- ✓ Special Needs
- ✓ Special Education
- ✓ Challenging Behaviour
- ✓ Learning Disabilities

#### Blade Cut Resistance

EN 388:2003	Level 5 (Old Standard)
EN 388:2016	Level E
ISO 13997:1999	Level 5 (The highest possible)
ANSI/ISEA 2016	Level A5

#### Puncture Resistance

EN 388:2016	Level 4 (The highest possible)
-------------	--------------------------------

#### Tear Resistance

EN 388:2016	Level 4 (The highest possible)
-------------	--------------------------------

#### Abrasion Resistance

EN 388:2016	Level 3
Dimensional Stability Test	Achieved Excellent Results

#### Product Details

Sizes	S, M, L, XL
Colour	As per image, due to the nature of the technical fibres
Place of Manufacture	UK
Clothing Care	Machine washable up to 40° Celsius. Wash dark colours separately. Do not wash with fabric conditioner. Reshape whilst damp

#### Size Guide in CM

	S	M	L	XL
Chest	92-102	102-107	107-112	112-117
Overarm Sleeve	49.5	52	57.5	63



**Learn More: Click here to view the BitePRO® Arm Guards V5 product demonstration.**





● BitePRO® Turtleneck Jacket

● BitePRO® Chest Protector

## Vital Protection

BitePRO® Upper Body Protection is meticulously designed to offer comprehensive coverage, safeguarding critical and sensitive areas with the utmost care. Our range, featuring robust jackets, jumpers, and chest protectors, ensures extensive protection where it's most needed – from the torso to sensitive regions, including the chest.

Each piece is engineered for rapid and easy wear, allowing staff in demanding environments to equip themselves swiftly and efficiently.



Product: **BitePRO® Bite Resistant Turtleneck Jacket**

Model #: **800001**

The BitePRO® Turtleneck Jacket offers extensive upper body protection with a focus on comfort, functionality and safety. The jacket is made entirely of our BitePRO® Fabric and is designed to cover the entire upper body, including the inner and back of the hands. The full-length zip extends up to a protective turtleneck, safeguarding the neck and vulnerable arteries when fully zipped.

#### Features & Benefits

- ✓ BitePRO® Fabric used on the entire garment providing excellent upper body bite resistance
- ✓ High neck protection
- ✓ Thumbholes to keep the sleeves in perfect position even when arms are fully stretched or during high level of activity
- ✓ Zipped front for quick application and removal
- ✓ 100% Latex free
- ✓ Lightweight and breathable
- ✓ Embroidery available (please ask for more details)
- ✓ Can be layered with arm guards and gloves

#### Who Is This Product Suitable For?

Professionals working within these sectors:

- ✓ Mental Health Care
- ✓ Special Needs
- ✓ Special Education
- ✓ Challenging Behaviour
- ✓ Learning Disabilities

#### Material Content

100% BitePRO® Fabric

#### Blade Cut Resistance

EN 388:2003	Level 5 (Old Standard)
EN 388:2016	Level E
ISO 13997:1999	Level 5 (The highest possible)
ANSI/ISEA 2016	Level A5

#### Puncture Resistance

EN 388:2016	Level 4 (The highest possible)
-------------	--------------------------------

#### Tear Resistance

EN 388:2016	Level 4 (The highest possible)
-------------	--------------------------------

#### Abrasion Resistance

EN 388:2016	Level 3
Dimensional Stability Test	Achieved Excellent Results

#### Product Details

Sizes	S, M, L, XL, 2XL, 3XL, 4XL, 5XL
Colour	Grey
Place of Manufacture	UK
Clothing Care	Machine washable up to 40° Celsius. Wash dark colours separately. Do not wash with fabric conditioner. Reshape whilst damp

#### Size Guide in CM

	S	M	L	XL	2XL	3XL	4XL	5XL
Chest	92-102	102-107	107-112	112-117	117-120	120-127	127-132	132-137



**Learn More: Click here to view the BitePRO® Turtleneck Jacket product demonstration.**



Product: **BitePRO® Bite Resistant Hoodie with Thumbholes**

Model #: **100103**

The BitePRO® Hoodie combines comfortable upper body protection with the added functionality of a protective hood. Made entirely of BitePRO® Fabric, the hoodie offers coverage for the entire torso and arms, including the inner and back of the hands. The hoodie has a specifically designed hood that helps prevent hair pulling, enhancing protection and safety in scenarios where this is a concern.

#### Features & Benefits

- ✓ BitePRO® Fabric used on the entire garment providing excellent bite resistance
- ✓ 100% Latex free
- ✓ Hooded garment for protection against hair pulling
- ✓ Discrete product that looks like normal clothing
- ✓ Thumbholes to keep the sleeves in perfect position even when arms are fully stretched or during high level of activity
- ✓ Embroidery available (please ask for more details)
- ✓ Lightweight and breathable
- ✓ Can be layered with arm guards and gloves

#### Who Is This Product Suitable For?

Professionals working within these sectors:

- ✓ Mental Health Care
- ✓ Special Needs
- ✓ Special Education
- ✓ Challenging Behaviour
- ✓ Learning Disabilities

#### Material Content

100% BitePRO® Fabric

#### Blade Cut Resistance

EN 388:2003	Level 5 (Old Standard)
EN 388:2016	Level E
ISO 13997:1999	Level 5 (The highest possible)
ANSI/ISEA 2016	Level A5

#### Puncture Resistance

EN 388:2016	Level 4 (The highest possible)
-------------	--------------------------------

#### Tear Resistance

EN 388:2016	Level 4 (The highest possible)
-------------	--------------------------------

#### Abrasion Resistance

EN 388:2016	Level 3
Dimensional Stability Test	Achieved Excellent Results

#### Product Details

Sizes	S, M, L, XL, 2XL, 3XL, 4XL, 5XL
-------	---------------------------------

Colour	Grey
--------	------

Place of Manufacture	UK
----------------------	----

#### Clothing Care



Machine washable up to 40° Celsius. Wash dark colours separately. Do not wash with fabric conditioner. Reshape whilst damp

#### Size Guide in CM

	S	M	L	XL	2XL	3XL	4XL	5XL
Chest	92-102	102-107	107-112	112-117	117-120	120-127	127-132	132-137



**Learn More: Click here to see the BitePRO® Hoodie product demonstration.**





Product: **BitePRO® Bite Resistant Sweatshirt**

Model #: **100109**

The BitePRO® Sweatshirt offers discreet, full upper body protection with a design that's both lightweight and breathable. Crafted from our durable BitePRO® Fabric, it provides effective resistance against bites, ideal for use in various professional environments. The sleeves extend to the wrists for comprehensive coverage, while the sweatshirt's overall design remains subtle and unobtrusive for periods of long wear.

#### Features & Benefits

- ✓ BitePRO® Fabric used on the entire garment providing excellent bite resistance
- ✓ 100% Latex free
- ✓ Can be layered with arm guards and gloves
- ✓ Discrete product that can be worn under clothing

#### Who Is This Product Suitable For?

Professionals working within these sectors:

- ✓ Mental Health Care
- ✓ Special Needs
- ✓ Special Education
- ✓ Challenging Behaviour
- ✓ Learning Disabilities

#### Material Content

100% BitePRO® Fabric

#### Blade Cut Resistance

EN 388:2003

Level 5 (Old Standard)

EN 388:2016

Level E

ISO 13997:1999

Level 5 (The highest possible)

ANSI/ISEA 2016

Level A5

#### Puncture Resistance

EN 388:2016

Level 4 (The highest possible)

#### Tear Resistance

EN 388:2016

Level 4 (The highest possible)

#### Abrasion Resistance

EN 388:2016

Level 3

Dimensional Stability Test

Achieved Excellent Results

#### Product Details

Sizes

S, M, L, XL, 2XL, 3XL, 4XL, 5XL

Colour

Grey

Place of Manufacture

UK

Clothing Care



Machine washable up to 40° Celsius. Wash dark colours separately. Do not wash with fabric conditioner. Reshape whilst damp

#### Size Guide in CM

	S	M	L	XL	2XL	3XL	4XL	5XL
Chest	92-102	102-107	107-112	112-117	117-120	120-127	127-132	132-137



Product: **BitePRO® Chest Protector**

Model #: **400112**

The BitePRO® Chest Protector is an essential safeguard for the upper torso, offering comprehensive protection against bites, pinches, scratches, and blunt force impacts. Weighing only 500g (18 oz), it is lightweight and comfortable, making it suitable for extended wear in various professional settings. The inner material of compression deflecting foam, safely guards the chest from blunt force trauma.

#### Features & Benefits

- ✓ Extremely thin and weighing only 500g (18 oz)
- ✓ Protects the upper torso from human bites, pinching, scratching and blunt force (impact)
- ✓ Comfortably worn for long periods
- ✓ Does not limit movement
- ✓ Easily put on and taken off within seconds due to elasticated back
- ✓ Designed with adjustable straps, it ensures a secure and customised fit

#### Who Is This Product Suitable For?

Professionals working within these sectors:

- ✓ Mental Health Care
- ✓ Special Needs
- ✓ Special Education
- ✓ Challenging Behaviour
- ✓ Learning Disabilities
- ✓ Care Homes
- ✓ Anyone working with individuals displaying challenging behaviour

#### Protection Material

Extreme shock absorbing and high compression deflecting foam with outstanding high dimensional stability

#### Cover Material

Tactel Nylon, Spacer Fabric and Bourellet Fabric

#### Blunt Trauma Protection

Good level of protection from kicks, punches, blows and blunt objects

#### Product Details

Sizes	S, M, L, XL, 2XL, 3XL
Weight	0.5KG (Size L)
Colour	Navy
Place of Manufacture	UK
Clothing Care	Machine washable covers. Protective fillers can be easily removed within seconds prior to washing.

Size Guide	S	M	L	XL	2XL	3XL
Chest / Bust (CM)	85-89	90-99	100-109	110-119	120-129	130-139
Chest / Bust (IN)	33-35	35-39	39-43	43-47	47-51	51-55
Panel	Medium Panel		Large Panel		XLarge Panel	



**Learn More: Click here to view the BitePRO® Chest Protector product demonstration.**



● BitePRO® Bite Resistant Long Johns

## Safeguarding Every Step.

BitePRO® Leg Protection provides essential safeguarding for the legs, an area particularly reachable by young children and bed-bound patients making them vulnerable in various professional interactions.

These protective garments are designed to guard against injuries that could compromise mobility and effectiveness in the workplace. From everyday movements to unpredictable scenarios, they ensure that each step taken by caregivers and educators is secure and protected.

● BitePRO® Leg Guards



Product: **BitePRO® Bite Resistant Long Johns**

Model #: **200102**

The BitePRO® Bite Resistant Long Johns are designed to offer comprehensive protection for the entire legs and groin area, crafted from our advanced, bite resistant BitePRO® fabric. These long johns are specifically made to reduce the risk of skin penetration from human teeth, providing a high level of safety for those in high-risk environments.

Comfortable and durable, they are an essential piece of protective wear for professionals requiring full lower body coverage in their line of work

#### Features & Benefits

- ✓ Excellent bite protection for the lower part of the body
- ✓ Slim fit
- ✓ Adjustable cord
- ✓ 100% Latex free
- ✓ Can be layered with BitePRO® Leg Guards
- ✓ Can be worn under clothing if required

#### Who Is This Product Suitable For?

Professionals working within these sectors:

- ✓ Mental Health Care
- ✓ Special Needs
- ✓ Special Education
- ✓ Challenging Behaviour
- ✓ Learning Disabilities

#### Material Content

100% BitePRO® Fabric

#### Blade Cut Resistance

EN 388:2003

Level 5 (Old Standard)

ISO 13997:1999

Level 5 (The highest possible)

ASTM F 1790-05

Level 4

#### Tear Resistance

EN 388:2003

Level 4 (The highest possible)

#### Abrasion Resistance

EN 388:2003

Level 3

Dimensional Stability Test

Achieved Excellent Results

#### Product Details

Sizes

S, M, L, XL, 2XL, 3XL

Colour

Grey

Place of Manufacture

UK

Clothing Care



Machine washable up to 40° Celsius. Wash dark colours separately. Do not wash with fabric conditioner. Reshape whilst damp

#### Size Guide in CM

	S	M	L	XL	2XL	3XL
Waist	67-76	77-86	87-96	97-106	107-116	117-126
Inside Leg Length	81	81	82.5	82.5	84	84



**Learn More: Click here to view the BitePRO® Long Johns product demonstration.**





Product: **BitePRO® Bite Resistant Leg Guards**

Model #: **200200**

BitePRO® Bite Resistant Leg Guards provide protection from the top of the foot to just below the knee. Made with our specialized bite-resistant fabric, they effectively reduce the risk of skin penetration from human teeth.

These guards also feature impact-absorbing foam, which lessens the severity of pain, bruising, and blunt force trauma from challenging behavior related injuries. Equipped with a full-length zip and adjustable cords at both the top and bottom, they ensure a secure and comfortable fit

#### Features & Benefits

- ✓ Excellent bite protection for the lower part of the body
- ✓ Sold in pairs
- ✓ Overtly worn
- ✓ Impact absorbing foam to lower leg area
- ✓ Adjustable cord and elastic fastening to top
- ✓ 100% Latex free
- ✓ Zip fastening for quick application and removal
- ✓ Can be layered with BitePRO® Long Johns

#### Who Is This Product Suitable For?

Professionals working within these sectors:

- ✓ Mental Health Care
- ✓ Special Needs
- ✓ Special Education
- ✓ Challenging Behaviour
- ✓ Learning Disabilities

#### Blade Cut Resistance

EN 388:2003	Level 5 (The highest possible)
ISO 13997:1999	Level 5 (The highest possible)
ASTM F 1790-05	Level 4


#### Tear Resistance

EN 388:2003	Level 4 (The highest possible)
-------------	--------------------------------

#### Abrasion Resistance

EN 388:2003	Level 3
-------------	---------

#### Product Details

Sizes	S, M, L, XL
Colour	Black
Place of Manufacture	UK
Clothing Care	Machine washable up to 40° Celsius. Wash dark colours separately. Do not wash with fabric conditioner. Reshape whilst damp
	

#### Size Guide in CM

	<b>S</b>	<b>M</b>	<b>L</b>	<b>XL</b>
Ankle	up to 28	29-32	33-36	37-40
Calf (at Widest Point)	up to 40	up to 44	up to 48	up to 52
Calf Length (from Ankle to Below Knee)	26	30	30	32



**Learn More: Click here to see the BitePRO® Leg Guards product demonstration.**



## In Safe Hands.

The hands, constantly in action and often in harm's way, require meticulous protection in close-contact environments where bites are a risk. BitePRO® Gloves are expertly designed to guard against such injuries, ensuring each touch, is safe and secure.

Recognising that hands are not only at high risk of infection due to their intricate joints and tendons but are also indispensable for daily tasks, BitePRO® gloves provide a shield without compromising functionality.

**BitePRO® Bite Resistant Gloves (Long)** ●



Product: **BitePRO® Bite Resistant Gloves (Short)**

Model #: **300161**

The BitePRO® Bite Resistant Gloves (Short) are specifically designed to shield the entire hands and wrists, crucial areas that are frequently at risk in professional settings. Made from our durable BitePRO® Fabric, these gloves are essential for tasks that require close proximity to the mouth, such as feeding, where the risk of bites is significantly higher. Designed with functionality in mind, the BitePRO® Bite Resistant Gloves (Short) maintain finger dexterity, enabling caregivers to perform intricate tasks effectively while being protected.



#### Features & Benefits

- ✓ BitePRO® Fabric used on the entire garment, providing excellent bite resistance from the wrist to the finger tip
- ✓ Brushed polyester palm
- ✓ Can be layered with arm guards or upper body protection
- ✓ Excellent bite resistance
- ✓ Soft durable polyester outer
- ✓ Elasticated wrist to create a snug fit
- ✓ 100% Latex free

#### Who Is This Product Suitable For?

Professionals working within these sectors:

- ✓ Mental Health Care
- ✓ Special Needs
- ✓ Special Education
- ✓ Challenging Behaviour
- ✓ Learning Disabilities

#### Blade Cut Resistance

EN 388:2003	Level 5 (The highest possible)
ISO 13997:1999	Level 5 (The highest possible)
ASTM F 1790-05	Level 4

#### Puncture Resistance

EN 388:2016	Level 4 (The highest possible)
-------------	--------------------------------

#### Tear Resistance

EN 388:2003	Level 4 (The highest possible)
-------------	--------------------------------

#### Abrasion Resistance

EN 388:2003	Level 3
Dimensional Stability Test	Achieved Excellent Results

#### Product Details

Sizes	XS, S, M, L, XL, 2XL
Colour	Grey
Clothing Care	Machine washable up to 40° Celsius. Wash dark colours separately. Do not wash with fabric conditioner. Reshape whilst damp



### 1. Find Your Hand Width

Wrap a tailor's measuring tape around your dominant hand just below the knuckles, excluding your thumb, and make a fist. This is your 'hand width'.

EU	US	Inches	CM
6	XS	6-7	15-17
7	S	7-8	17-20
8	M	8-9	20-22
9	L	9-10	22-25
10	XL	10-11	25-27
11	2XL	11+	28+



### 2. Find Your Hand Length

Measure from the bottom edge of your palm to the tip of your middle finger to find your 'finger length'.

EU	US	Inches	CM
6	XS	6.5	16.5
7	S	7	18
8	M	7.5	19
9	L	8	20
10	XL	8.5	21.5
11	2XL	8	23







Product: **BitePRO® Bite Resistant Gloves (Long)**

Model #: **300162**

The BitePRO® Bite Resistant Gloves (Long) provide extensive protection, covering the hands, wrists and forearms. Crafted from our advanced BitePRO® Fabric, these gloves are essential for preventing bites in situations where hands and lower arms are at high risk, such as during close-contact tasks like feeding. The gloves allow for effective finger dexterity, ensuring caregivers and educators can carry out detailed tasks efficiently while fully protected.



#### Features & Benefits

- ✓ BitePRO® Fabric used on the entire garment, providing excellent bite resistance from the wrist to the finger tip
- ✓ Brushed polyester palm
- ✓ Can be layered with arm guards or upper body protection
- ✓ Excellent bite resistance
- ✓ Soft durable polyester outer
- ✓ Elasticated wrist to create a snug fit
- ✓ 100% Latex free

#### Who Is This Product Suitable For?

Professionals working within these sectors:

- ✓ Mental Health Care
- ✓ Special Needs
- ✓ Special Education
- ✓ Challenging Behaviour
- ✓ Learning Disabilities

#### Blade Cut Resistance

EN 388:2003	Level 5 (The highest possible)
ISO 13997:1999	Level 5 (The highest possible)
ASTM F 1790-05	Level 4

#### Puncture Resistance

EN 388:2016	Level 4 (The highest possible)
-------------	--------------------------------

#### Tear Resistance

EN 388:2003	Level 4 (The highest possible)
-------------	--------------------------------

#### Abrasion Resistance

EN 388:2003	Level 3
Dimensional Stability Test	Achieved Excellent Results

#### Product Details

Sizes	XS, S, M, L, XL, 2XL
Colour	Grey
Clothing Care	Machine washable up to 40° Celsius. Wash dark colours separately. Do not wash with fabric conditioner. Reshape whilst damp



#### 1. Find Your Hand Width

Wrap a tailor's measuring tape around your dominant hand just below the knuckles, excluding your thumb, and make a fist. This is your 'hand width'.

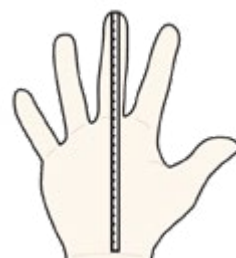
EU	US	Inches	CM
6	XS	6-7	15-17
7	S	7-8	17-20
8	M	8-9	20-22
9	L	9-10	22-25
10	XL	10-11	25-27
11	2XL	11+	28+



#### 2. Find Your Hand Length

Measure from the bottom edge of your palm to the tip of your middle finger to find your 'finger length'.

EU	US	Inches	CM
6	XS	6.5	16.5
7	S	7	18
8	M	7.5	19
9	L	8	20
10	XL	8.5	21.5
11	2XL	8	23







Product: **BitePRO® Bite Resistant Fingerless Gloves (Long)**

Model #: **300163**

The BitePRO® Bite Resistant Fingerless Gloves (Long) offer a unique combination of protection and functionality. Extending from the forearms to the wrists, these gloves are made with our durable BitePRO® fabric, providing essential bite resistance in high-risk environments. Their fingerless design allows for maximum finger dexterity, enabling caregivers to perform even the most intricate tasks with ease, while still safeguarding their hands and lower arms.



#### Features & Benefits

- ✓ BitePRO® Fabric used on the entire garment, providing excellent bite resistance from the forearm to the first knuckle of the finger
- ✓ Brushed polyester palm
- ✓ Can be layered with arm guards or upper body protection
- ✓ Excellent bite resistance
- ✓ Fingerless style to enable you to maintain manual dexterity, use a phone/PSA and dispense medication
- ✓ Soft durable polyester outer & palm
- ✓ Elasticated wrist to create a snug fit
- ✓ 100% Latex free

#### Who Is This Product Suitable For?

Professionals working within these sectors:

- ✓ Mental Health Care
- ✓ Special Needs
- ✓ Special Education
- ✓ Challenging Behaviour

#### Blade Cut Resistance

EN 388:2003	Level 5 (The highest possible)
ISO 13997:1999	Level 5 (The highest possible)
ASTM F 1790-05	Level 4

#### Puncture Resistance

EN 388:2016	Level 4 (The highest possible)
-------------	--------------------------------

#### Tear Resistance

EN 388:2003	Level 4 (The highest possible)
-------------	--------------------------------

#### Abrasion Resistance

EN 388:2003	Level 3
Dimensional Stability Test	Achieved Excellent Results

#### Product Details

Sizes	XS, S, M, L, XL, 2XL
Colour	Grey
Clothing Care	Machine washable up to 40° Celsius. Wash dark colours separately. Do not wash with fabric conditioner. Reshape whilst damp

### 1. Find Your Hand Width

Wrap a tailor's measuring tape around your dominant hand just below the knuckles, excluding your thumb, and make a fist. This is your 'hand width'.

EU	US	Inches	CM
6	XS	6-7	15-17
7	S	7-8	17-20
8	M	8-9	20-22
9	L	9-10	22-25
10	XL	10-11	25-27
11	2XL	11+	28+



### 2. Find Your Hand Length

Measure from the bottom edge of your palm to the tip of your middle finger to find your 'finger length'.

EU	US	Inches	CM
6	XS	6.5	16.5
7	S	7	18
8	M	7.5	19
9	L	8	20
10	XL	8.5	21.5
11	2XL	8	23



# Safety and Dignity.

As the newest addition to the BitePRO® range, the Seclusion Nightie stands out for its dedicated purpose: protecting patients in the most sensitive of environments. Recognising a significant need within psychiatric and mental health care settings, this product slightly differs from our traditional focus on staff protection as it focuses on protecting extremely vulnerable patients.

Crafted with our high-strength fabric, the Seclusion Nightie offers exceptional tear, puncture, and cut resistance, ensuring robust protection against certain forms of self-harm. Its design prioritises dignity and comfort, featuring reinforced seams and an anti-ligature construction to reduce the risk of the garment being torn.

The Seclusion Nightie is more than just protective wear; it is a testament to our commitment to enhancing safety for all individuals in high-risk settings, with the utmost respect for their dignity and care needs.

BitePRO® Seclusion Nightie ●





Product: **BitePRO® Seclusion Nightie**

Model #: **100122**

The BitePRO® Seclusion Nightie is specifically designed for vulnerable patient safety in sensitive care and intervention settings like psychiatric and mental health facilities. This garment is made with our fabric which has exceptional tear resistance. It features reinforced seams for added strength, enhancing the nightie's durability and making it more resistant to tearing and damage.

The Seclusion Nightie combines practical safety features with a design that ensures patient dignity and comfort, suitable for high-risk environments where both protection and respect are paramount

#### Features & Benefits

- ✓ BitePRO® Fabric used on the entire garments providing excellent tear, cut and slash resistance
- ✓ Seclusion nightie, specifically designed to minimise the risk of self harm (anti ligature)
- ✓ Reinforced seams throughout the garment for extra strength, reducing the risk of intentional damage
- ✓ 100% latex free

#### Who Is This Product Suitable For?

Professionals working within these sectors:

- ✓ Mental health care
- ✓ Psychiatric care
- ✓ Custody centres
- ✓ High risk secure units

#### Material Content

100% BitePRO® Fabric

#### Blade Cut Resistance

EN 388:2003	Level 5 (Old Standard)
EN 388:2016	Level E
ISO 13997:1999	Level 5 (The highest possible)
ANSI/ISEA 2016	Level A5

#### Puncture Resistance

EN 388:2016	Level 4 (The highest possible)
-------------	--------------------------------

#### Tear Resistance

EN 388:2016	Level 4 (The highest possible)
-------------	--------------------------------

#### Abrasion Resistance

EN 388:2016	Level 3
Dimensional Stability Test	Achieved Excellent Results

#### Product Details

Sizes	S, M, L, XL, 2XL, 3XL, 4XL, 5XL
Colour	Grey
Place of Manufacture	UK
Clothing Care	Machine washable up to 40° Celsius. Wash dark colours separately. Do not wash with fabric conditioner. Reshape whilst damp



#### Size Guide in CM

	S	M	L	XL	2XL	3XL	4XL	5XL
Chest	92-102	102-107	107-112	112-117	117-120	120-127	127-132	132-137

# Additional Details and Contact

## Caring for Your BitePRO® Clothing

- This product is designed to minimise the risk of injury from challenging behaviours such as biting, pinching, slash injuries, and scratching.
- Added protection garments not only reduce the risk of a bite breaking the skin but also reduce the associated pain, bruising and blunt force trauma.
- This product does not protect from hypodermic needles or similar sharp pointed objects
- BitePRO® Fabric is an ultra-high performance cut resistant fabric. However, it is not completely cut proof.
- BitePRO® garments should be stored in a temperate dry environment.
- If you suspect aging or loss of performance with your product please contact us directly and email in photographic images.
- Do not attempt to repair BitePRO® Clothing garments yourself as we use specialist threads to stitch and sew garments.
- BitePRO® garments are not recyclable. For safe disposal please return your product to BitePRO® Clothing Ltd.

## Maintenance

- Do not wear this product if damaged, always inspect prior to use
- Do not leave in a contaminated condition, launder immediately
- When not worn, store this product in cool dry conditions away from direct sunlight
- Wash dark colours separately
- Do not wash with fabric conditioner or bleach
- Reshape whilst damp
- Do not tumble dry







# We're here to help.

At BitePRO®, we understand the importance of finding the right protective gear for your team's specific needs. To assist you in making the best choice, we offer personalised online video call demonstrations of our products.

## How to Request a Demo:

**1. Email Us:** Reach out to us at [info@bite-pro.com](mailto:info@bite-pro.com) with some basic information about your organisation.

**2. Specify Your Interest:** Let us know which products you're particularly interested in. Whether it's arm guards, jackets, or our gloves, we're ready to showcase what you need.

**3. We'll Get in Touch:** One of our dedicated team members will respond to your request promptly. We'll arrange a convenient time for your online demo.

During the video call, you'll get a close look at our products, understand their features, and see how they can be best utilised in your environment. We'll also be ready to answer any questions and provide recommendations based on your specific needs.

Connect with us  
on social media:





## **BitePRO® Limited**

Unit 603  
Avenue D  
Thorp Arch Estate  
Wetherby  
LS23 7FS  
United Kingdom

☎ +44 (0) 1423 863790

✉ [info@bite-pro.com](mailto:info@bite-pro.com)

🌐 [www.bite-pro.com](http://www.bite-pro.com)

